

GUI GUIDER PEL 2023

PUBLIC

Mike Susen
Product & Requirements Manager, Ecosystem
NOVEMBER 2023



SECURE CONNECTIONS
FOR A SMARTER WORLD

PUBLIC

NXP, THE NXP LOGO AND NXP SECURE CONNECTIONS FOR A SMARTER WORLD ARE TRADEMARKS OF NXP B.V.
ALL OTHER PRODUCT OR SERVICE NAMES ARE THE PROPERTY OF THEIR RESPECTIVE OWNERS. © 2023 NXP B.V.





OVERVIEW

What is GUI Guider

Supported platforms

Application templates

Features

Support

Plans

GUI GUIDER

News

- Latest release v1.6.1
- LVGL v7.10.1 & v8.3.5

Features

- WYSIWYG UI design with drag & drop support
- Free for use with NXP devices
- Ability to add events, actions, and animations
- Integrated UI application codes
- PXP and GPU acceleration
- Support for importing images and custom fonts
- Video decoding, LottieFiles animation
- Supports C and MicroPython
- Direct project output for MCUXpresso IDE, IAR and Keil
- Project export for RT-Thread and Zephyr



<https://www.nxp.com/gui-guider>

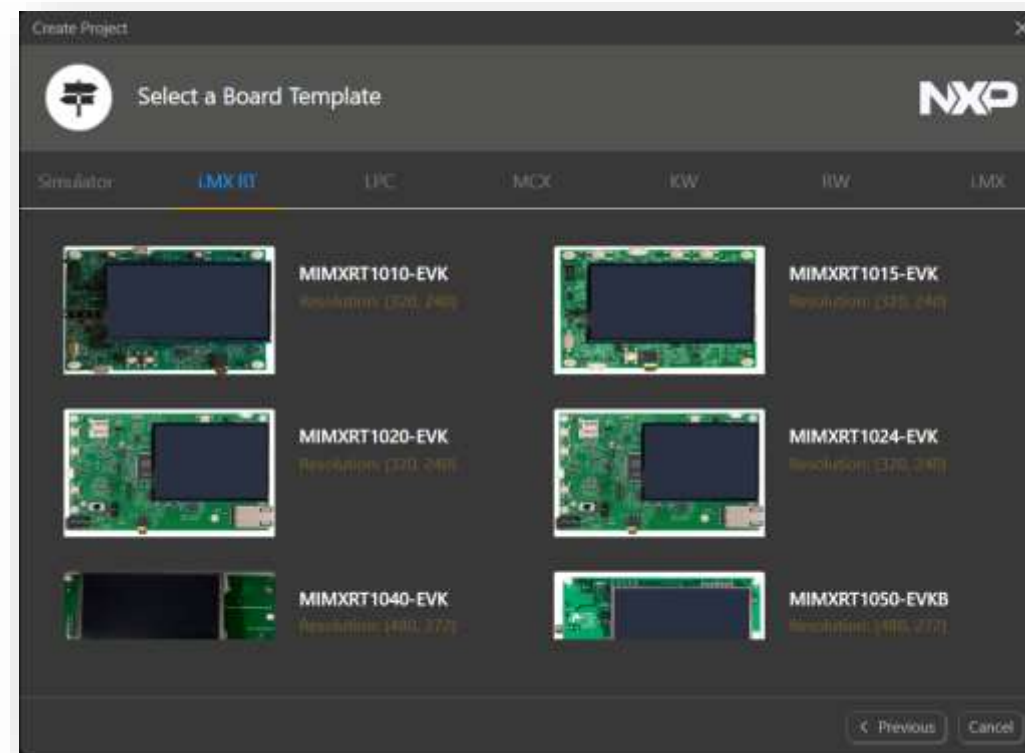




NXP's solution	GUI Guider – LVGL library based
NXP's webpage	https://www.nxp.com/
Solution's webpage	https://www.nxp.com/gui-guider
Supported devices	i.MX RT500 i.MX RT10xx i.MX RT11xx LPC54xx LPC55xx MCX KW RW i.MX 9
Software release	MCUXpresso SDK, GUI Guider release https://mcuxpresso.nxp.com/en/welcome
Get started	What is GUI Guider?
Demo videos	https://www.youtube.com/watch?v=czTJKyfbFis https://www.youtube.com/watch?v=D9RLVtzd3eE https://www.youtube.com/watch?v=yjTOEkbAsE4 https://www.youtube.com/watch?v=8y_Wdsci0ns
Trainings/Webinars	Getting Started with GUI Guider Design Your Next Graphical UI for Industrial HMI Applications Using NXP's i.MX RT1170 MCU, GUI Guider and LVGL i.MX RT1170: Arrow Hands-On Trainings Avnet: MaaXBoard RT Reference Designs to Accelerate Your i.MX RT1170 Application Development
Support	https://community.nxp.com/t5/GUI-Guider/bd-p/GUI-Guider
Price	Free to use on NXP silicon

SUPPORTED DEVICES – I.MX RT SERIES

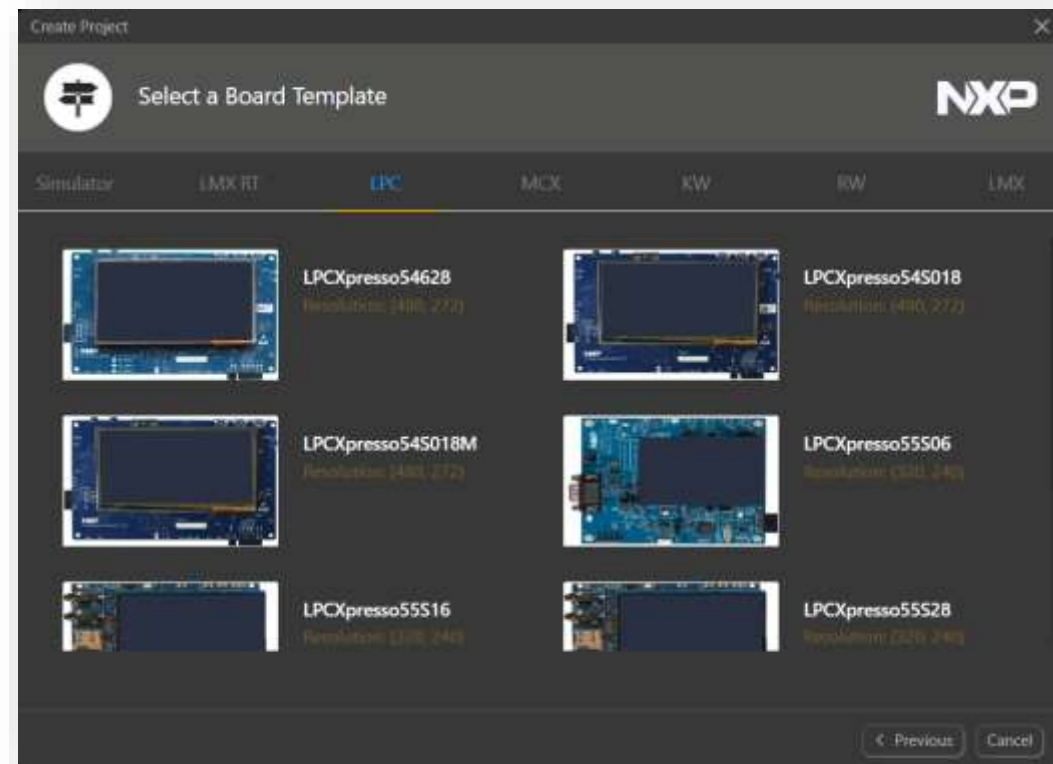
Device	Display
i.MX RT1010-EVK	Adafruit-1947 SPI, 2.8" 320 x 240 px
i.MX RT1015-EVK	
i.MX RT1020-EVK	
i.MX RT1024-EVK	RK043FN02H-CT RK043FN66HS-CTG RGB, 4.3" 480 x 272 px
i.MX RT1040-EVK	
i.MX RT1050-EVKB	
i.MX RT1060-EVKB	
i.MX RT1060-EVKC	
i.MX RT1064-EVK	
i.MX RT1160-EVK	RK055HDMIPI4M RK055HDMIPI4MA0 RPI 7" LCD MIPI-DSI, 5.5", 7" 720 x 128, 800 x 480 px
i.MX RT1170-EVK	
i.MX RT1170-EVKB	
i.MX RT595-EVK	G1120B0MIPI MIPI-DSI, 1.2" 390 x 390 px



* More devices supported in MCUXpresso SDK

SUPPORTED DEVICES – LPC SERIES

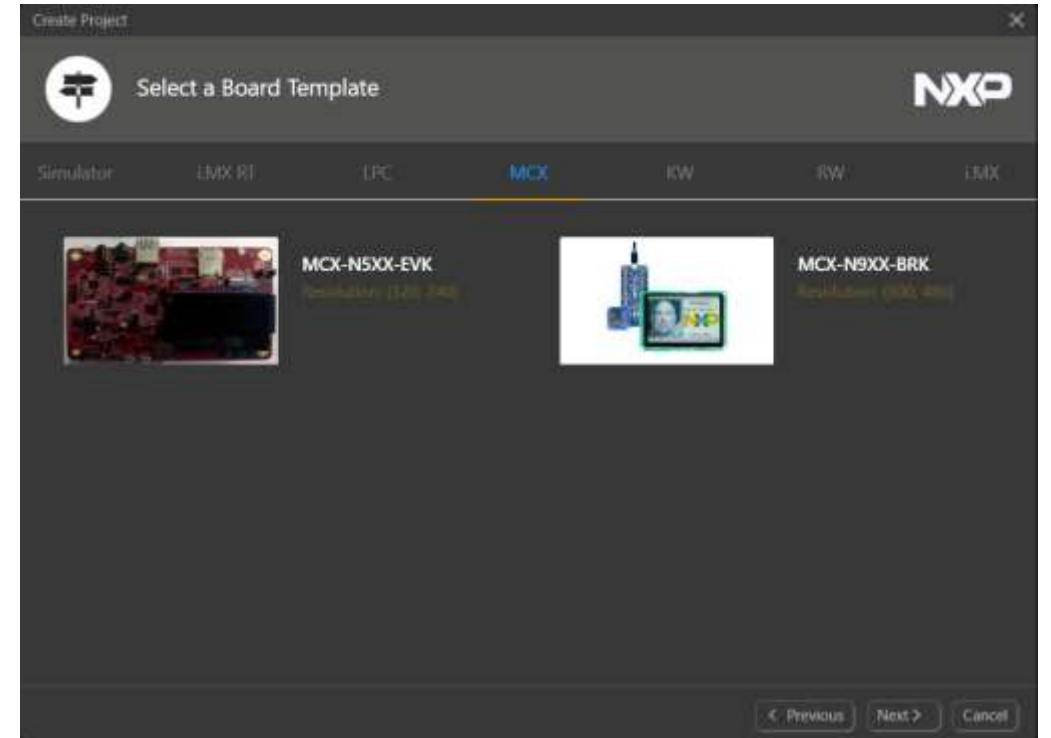
Device	Display
LPC54628	RK043FN02H-CT RK043FN66HS-CTG RGB, 4.3" 480 x 272 px
LPC54S018	
LPC54S018J4M	
LPC55S06	Adafruit-1947 SPI, 2.8" 320 x 240 px
LPC55S16	
LPC55S28	
LPC55S69	



* More devices supported in MCUXpresso SDK

SUPPORTED DEVICES – MCX

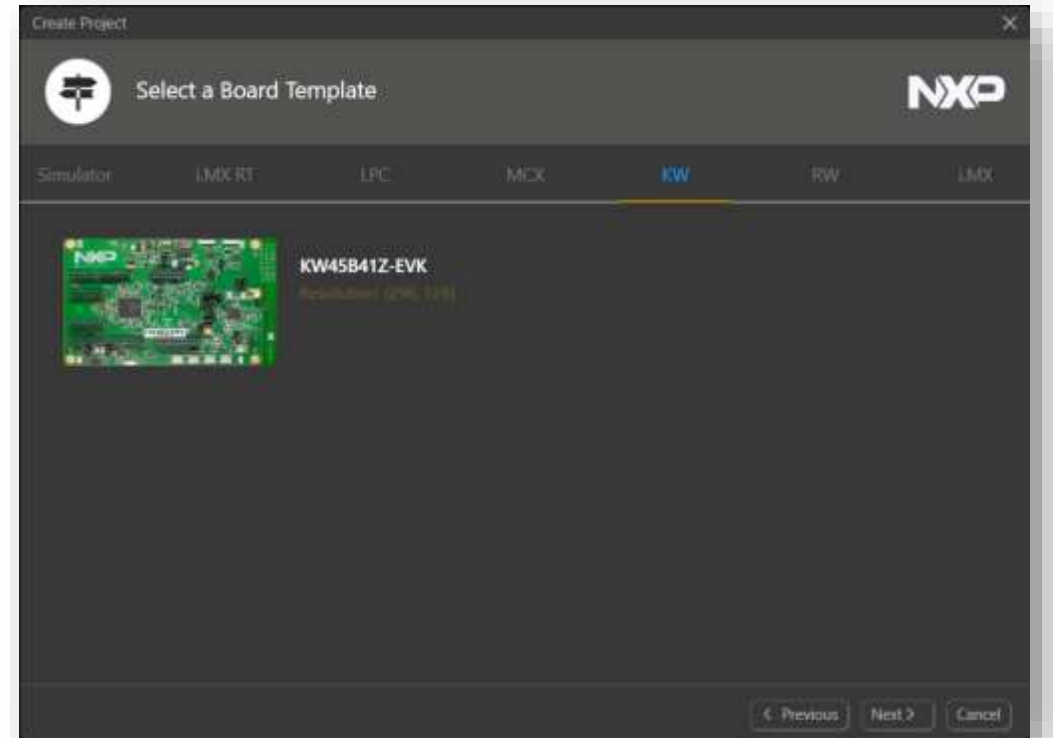
Device	Display
MCX-N9XX-BRK	TFT Proto FlexIO, 5" 800 x 480 px
MCX-N5XX-EVK	Adafruit-1947 SPI, 2.8" 320 x 240 px



* More devices supported in MCUXpresso SDK

SUPPORTED DEVICES – KW

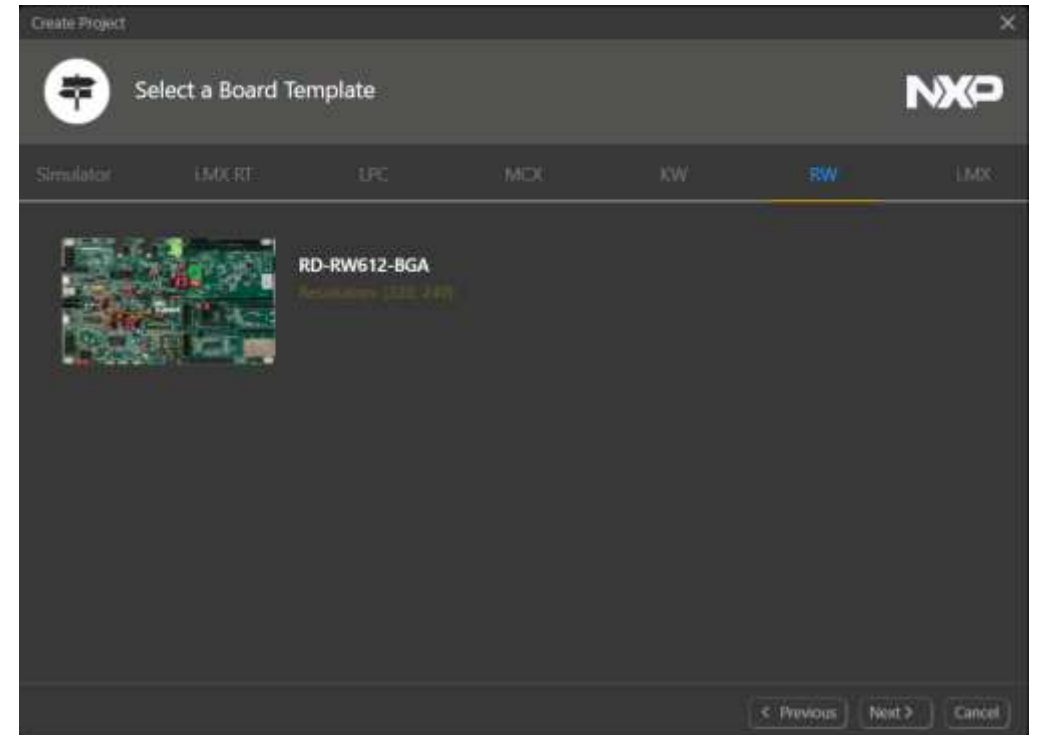
Device	Display
KW45B41Z-EVK	Waveshare ePaper-Shield SPI, 2.9" 296 x 128 px



* More devices supported in MCUXpresso SDK

SUPPORTED DEVICES – RW

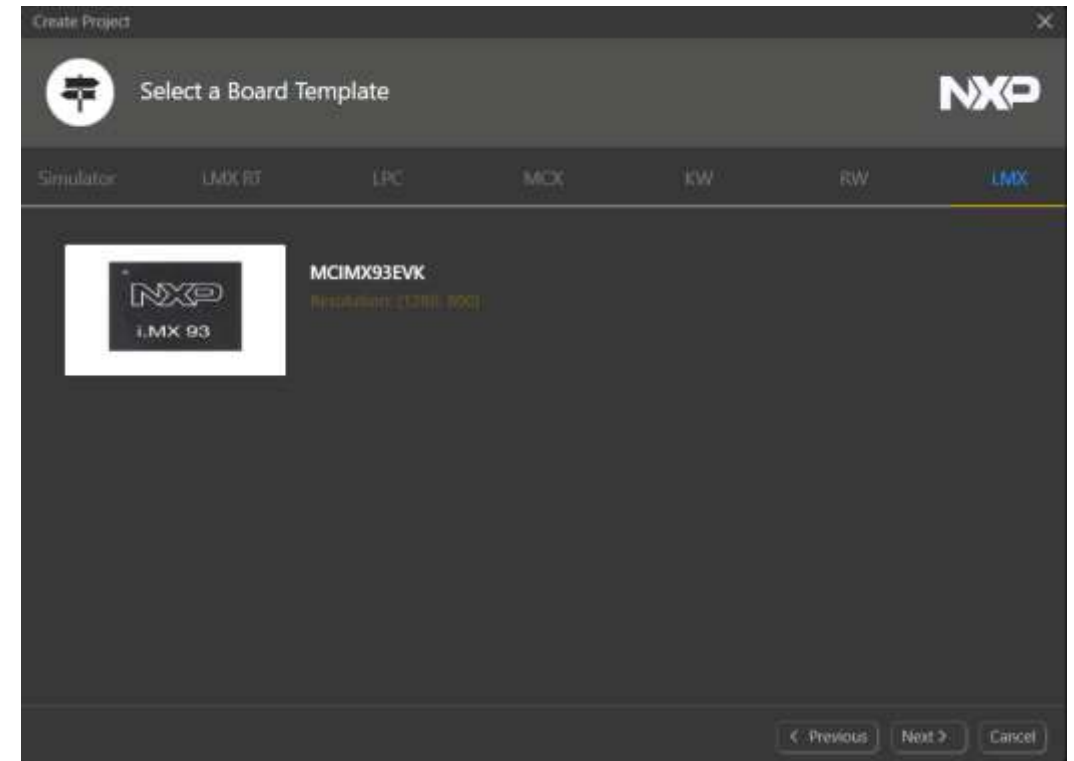
Device	Display
RD-RW612-BGA	Adafruit-1947 SPI, 2.8" 320 x 240 px



* More devices supported in MCUXpresso SDK

SUPPORTED DEVICES – I.MX

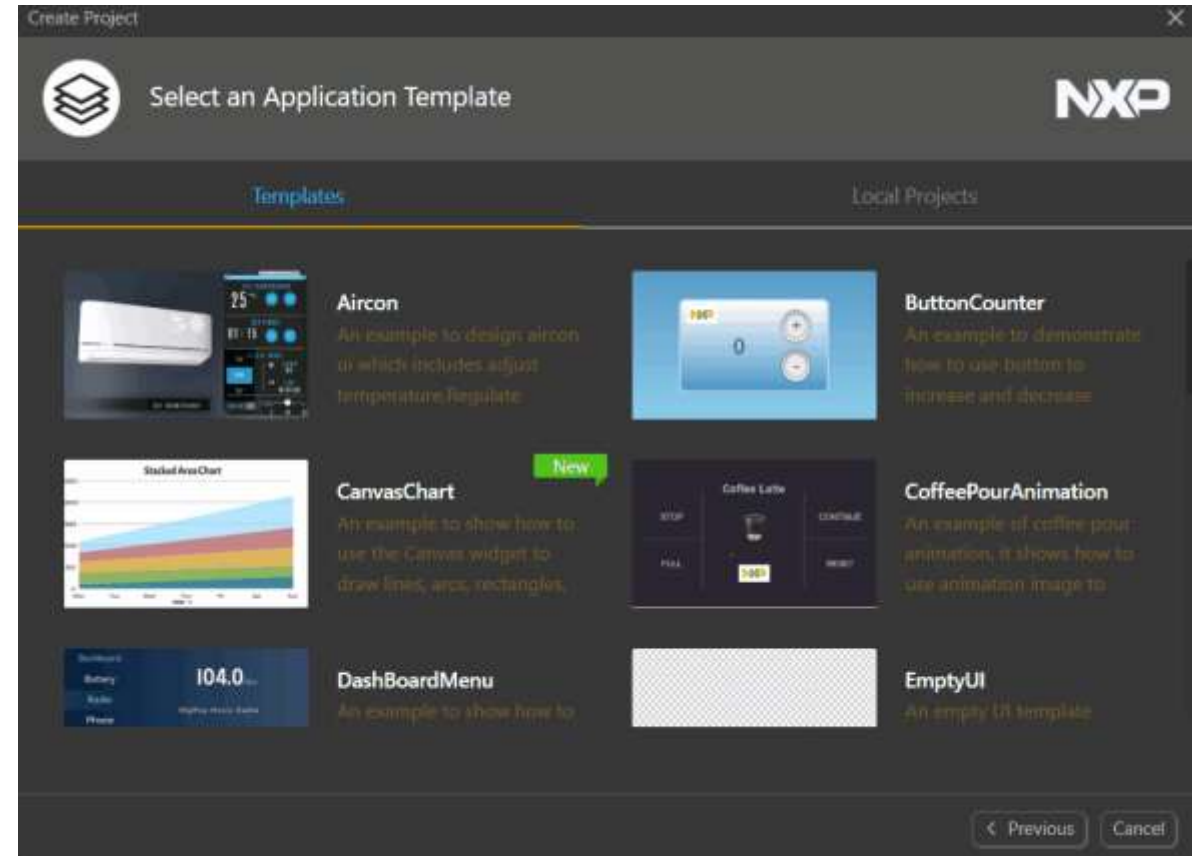
Device	Display
MCIMX93EVK	DY1212W-4856 MIPI-DSI, 12.1" 1280 x 800 px



* More devices supported in MCUXpresso SDK

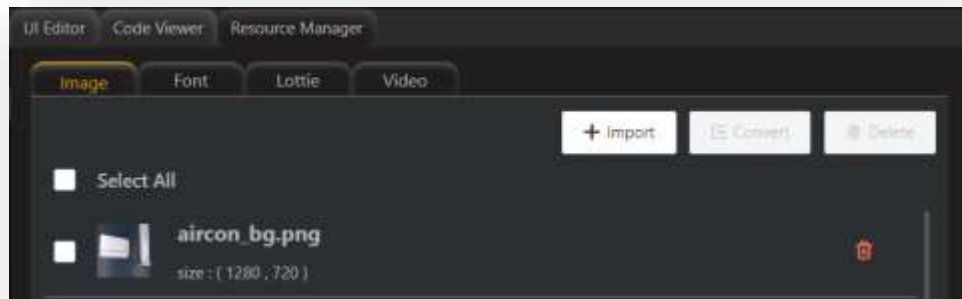
APPLICATION TEMPLATES

- Predefined demo examples
- Platform specific demos
- Wide OS support
 - Free-RTOS
 - Zephyr
 - RT-Thread
 - Yocto (MPUs)
 - QNX (MPUs)
- Community support
- Documentation

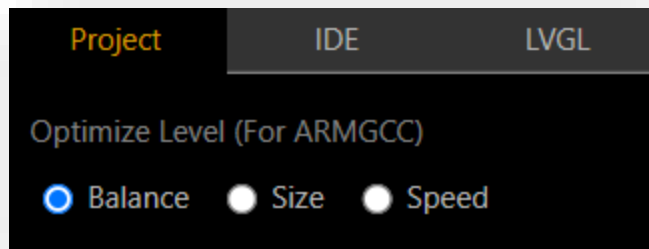


FEATURES

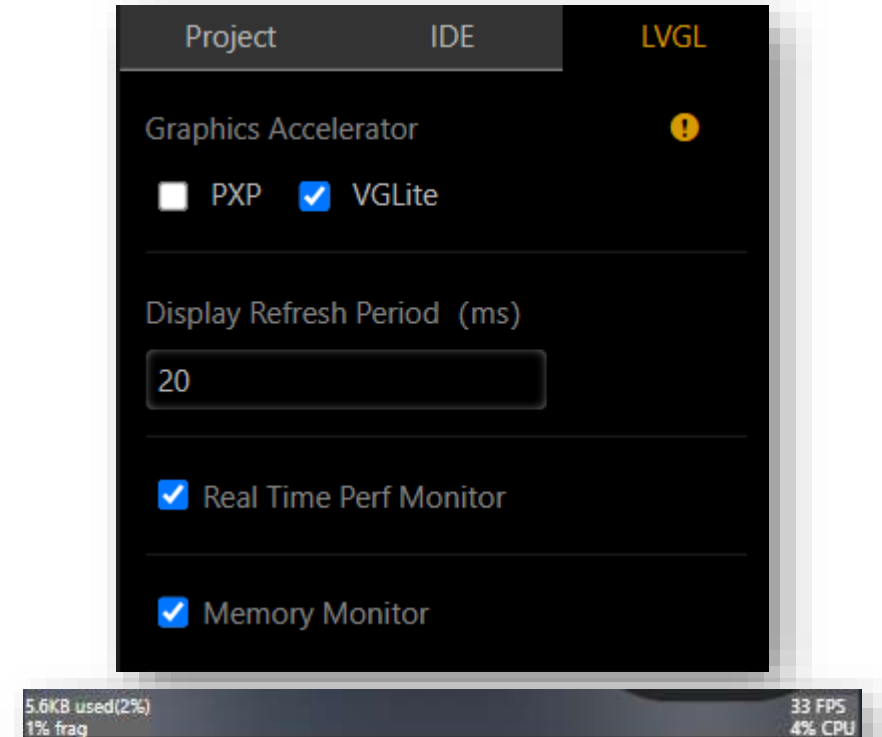
- Resource manager
 - Easy resource maintenance
 - Image converter
 - Resource memory storing options



- Code optimizer
 - Optimization for ARM GCC

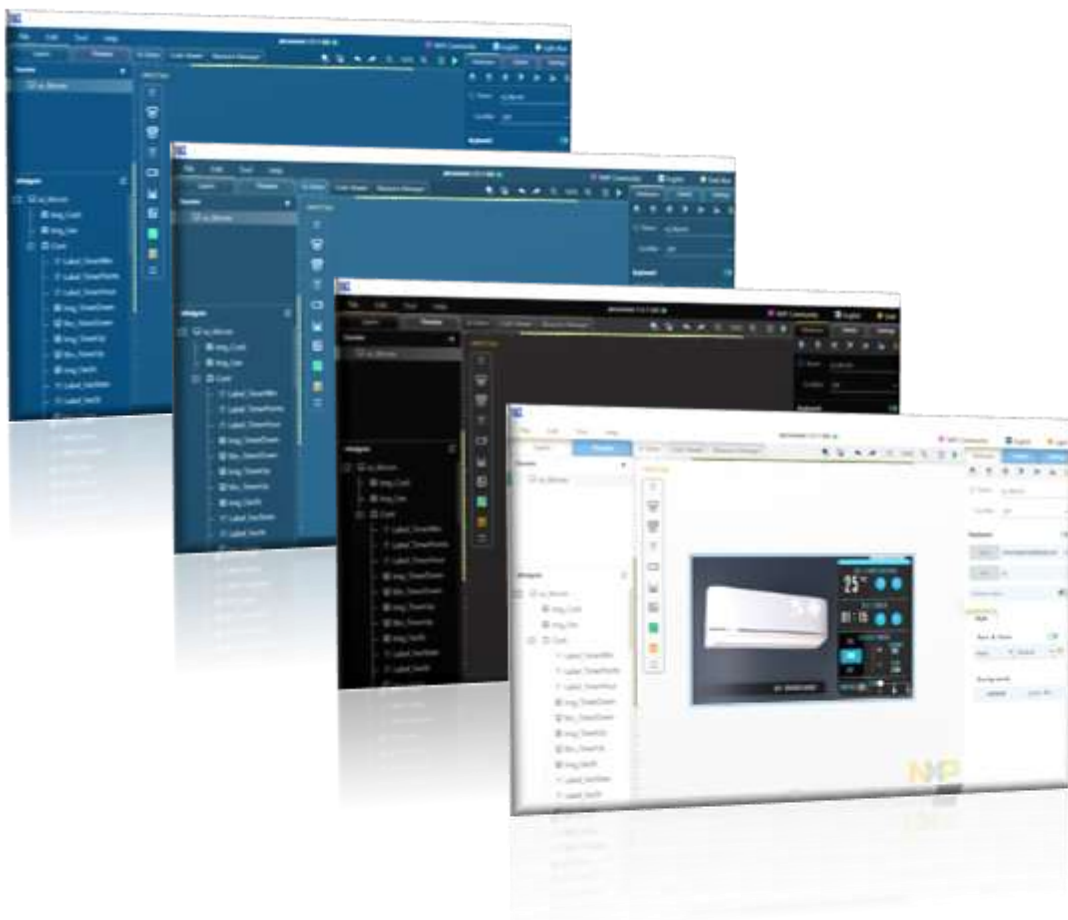


- Hardware acceleration, monitoring
 - PXP and VGLite on supported devices
 - Built-in performance monitor
 - Built-in memory monitor

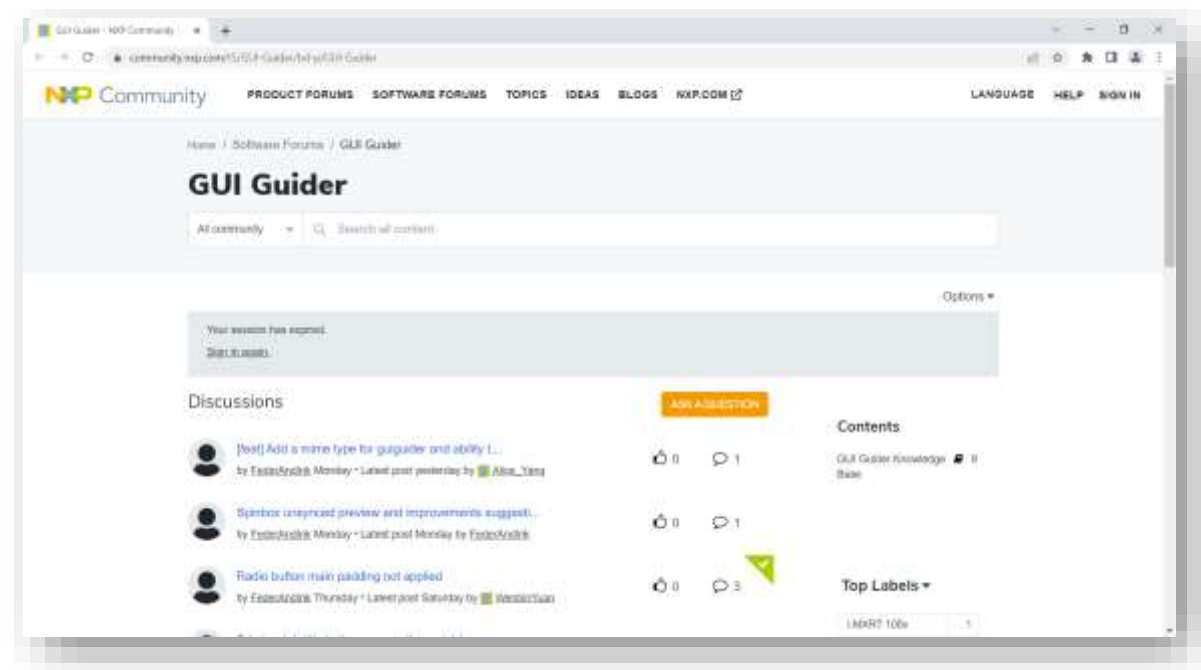


FEATURES

- GUI Guider themes



- Direct help via NXP Community



<https://community.nxp.com/t5/GUI-Guider/bd-p/GUI-Guider>

WHAT'S NEW IN GUI GUIDER 1.6.1 ?

Raspberry Pi 7" display on i.MX RT 1170-EVKB



QNX operating system on i.MX93-EVK



Smartwatch running on i.MX RT595



[Video](#)

WHAT'S PLANNED FOR NEXT RELEASES

- E-bike demo running KW45
- MCX mass market platforms
- Low cost LCD-PAR-S035
- FreeMASTER integration
- Widget and variable binding
- UI & UX improvements

FreeMASTER Integration with GUI Guider

Hardware

- MCX-N947-BRK
- PMSM
- Motor adaptor board
- J-Link debug probe

Software

- Host
 - FreeMASTER: JSON-RPC server
 - GUI Guider: JSON RPC client
 - Widgets in motor control application: label, image button, slider, meter, led, chart
- MCX-N947-BRK
 - SDK with FreeMASTER function
 - Motor control application

Connection

- Connect PMSM with MCX by control adaptor board
- Connect MCX with host by J-Link





SECURE CONNECTIONS
FOR A SMARTER WORLD



TECHNOLOGY SHOWROOM

JOURNEYS BY DESIRED ENGAGEMENT

- Self-guided tour
- Live-streaming at set times
- Guided tours

40+ VIRTUAL DEMOS

- Focus on system solutions
- Set up along NXP verticals

JOURNEYS BY DESIRED FOCUS

- Edge & AI/ML
- Safety & Security
- Connectivity
- Analog



SHOWROOM.NXP.COM



SECURE CONNECTIONS
FOR A SMARTER WORLD



[SHOWROOM.NXP.COM](https://www.showroom.nxp.com)